

# Getting the most from your MDS scrubber rules

Josh Miller, SimpleLTC

# 3 critical steps to get the most from your MDS scrubber rules



1. Collaborate with your team to define the rules that are critical and revisit this conversation regularly. Avoid notification fatigue and get the most out of the rules that have the greatest impact for your specific situation.
2. Use the scrubber to identify opportunities for increased reimbursement. Our data shows that many assessments are just one NTA comorbidity point away from a \$30/day increase in Medicare reimbursement.
3. Leverage your scrubber to track and enforce compliance with key quality improvement metrics.



# Collaborate with your team

Workflow – what is my MDS workflow?

## MDS Transmission Activity

Upload New MDS

Online

**Batches** | **Assessments**

Start:  End:  Status:  Facility:

Upload Time & Facility	Status	Progress Tracker	
<b>5/14/2020 at 3:53 PM - Orange Nursing</b> <i>Download 20110222145414-1.zip</i>	4  0  0  0	Uploaded  Analyzed  Transmitted  Finalized	<a href="#">View Analysis</a>
<b>5/14/2020 at 2:42 PM - Orange Nursing</b> <i>Download 20110221170005-1.zip</i>	5  0  0  0	Uploaded  Analyzed  Transmitted  Finalized	
<b>5/13/2020 at 1:56 PM - Keedsler Health</b> <i>Download 03122011-1.zip</i>	2  0  2  0	Uploaded  Analyzed  Transmitted  Finalized	
<b>5/13/2020 at 10:39 AM - Sunshine Palace Nursing</b> <i>Download 20110218123549-1.zip</i>	10  1  6  0	Uploaded  Analyzed  Transmitted  Finalized	

# Collaborate with your team



Select the scrubber rules that are deemed critical in your environment.

- *Review Critical*
- *Review Status*
- *Ignore*

Status	Critical	Rule
<input checked="" type="checkbox"/>	<input checked="" type="checkbox"/>	N037.01: (S) Improvements in Function Assessment indicates that the resident declined in function (G0110B1, G0110E1, G0110D1).
<input checked="" type="checkbox"/>	<input type="checkbox"/>	N030.01: (L) Depressive Symptoms Assessment indicates depressive symptoms during the 2 weeks preceeding the MDS target assessment date.
<input checked="" type="checkbox"/>	<input checked="" type="checkbox"/>	N025.01: (L) Loss of Bowel/Bladder Control Assessment indicates resident frequently loses control of their bowel or bladder (H0300 = [2, 3] OR H0400 = [2, 3] ).
<input type="checkbox"/>	<input type="checkbox"/>	N023.01: (L) Pneumococcal Vaccine Contraindication Assessment indicates that the pneumococcal vaccine was not given due to medical contraindication during the 12-month reporting period (O0300B = [1] ).



# Collaborate with your team

What is our review/approval process?

#2234875: F5_14786_NP_2112011.xml			
	<p><i>Name:</i> <b>Hall, Phillip</b></p> <p><i>Reason for Assessment:</i> Entry Tracking Record</p> <p><i>CMI Adjusted Rate:</i> <b>\$605.27</b></p> <p><i>Nursing:</i> <b>CBC1   \$101.76   7</b></p> <p><i>PT &amp; OT:</i> <b>TF   \$101.53 , \$135.61   9</b></p>	<p><i>SSN:</i> <b>xxx-xx-0000</b></p> <p><i>Target Date:</i> <b>10/11/2019</b></p> <p><i>Primary Diagnosis:</i> <b>F03.90</b></p> <p><i>NTA:</i> <b>ND   \$111.49</b></p> <p><i>SLP:</i> <b>SG   \$58.28</b></p>	<p><b>3</b> Warnings</p>
#1	<p><b>Quality Measures: N026.02: (L) Catheter Left in Bladder</b></p> <p>Assessment indicates the use of indwelling catheters (H0100A = [1]).</p> <p>Recommended Action: Verify the MDS field value for H0100A is accurate. Take appropriate clinical actions.</p>		
#2	<p><b>PDPM: Antidepressants but not Depressed</b></p> <p>The resident is on antidepressants (N0410C = 1) but their PHQ-9 score is below the threshold for depression.</p> <p>Recommended Action: Verify that section D is accurately and completely filled out.</p>		
#3	<p><b>PDPM: NTA Comorbidity Score Bubble</b></p> <p>NTA Comorbidity Score is 1 point away from the next case-mix group.</p> <p>Recommended Action: Review responses to PDPM NTA Comorbidity related fields for accuracy.</p>		

# Collaborate with your team



Approve or revise?

*Approve*  *Cancel*



## *Email Notifications* What's This?

---

- Send me e-mails about critical MDS analyzer alerts
- Send me e-mails when a MDS submission is waiting for approval
- Send me only digest emails of all alerts (one e-mail per day)

# Identify opportunities

---



A few examples include...

- NTA Comorbidity Score Bubble: NTA Comorbidity Score is 1 point away from the next case-mix group.
- N015.01: (L) High-Risk Pressure Ulcers: Assessment indicates that there is a high risk for pressure ulcers and one or more Stage II-IV pressure ulcers are present.
- Coronavirus and Contact with Others (COVID-19): Indication of Coronavirus and Contact with Others.

# Identify opportunities



NTA Comorbidity Score Bubble: NTA Comorbidity Score is 1 point away from the next case-mix group.

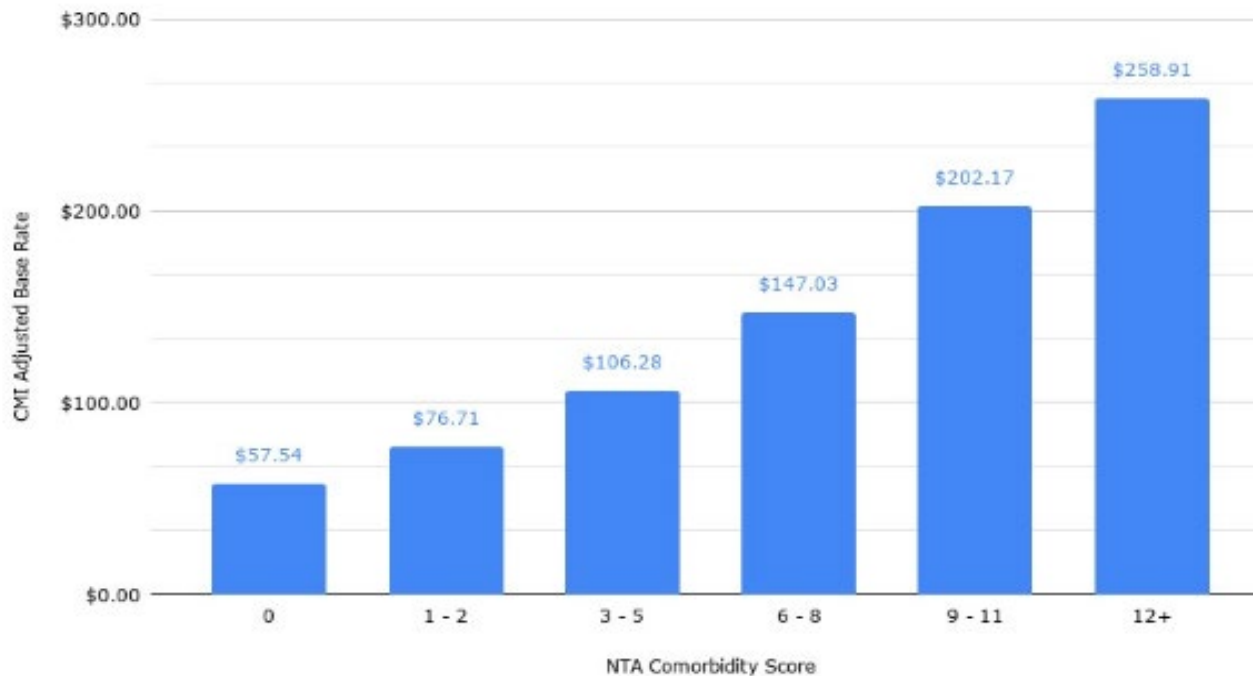
- NTA comorbidities are commonly missed. Find all comorbidities to increase accuracy on assessments but also to increase awareness when care planning.
- 1500+ ICD10 codes that are related to NTA comorbidities / dozens of MDS fields
- Bubbles around PDPM (knowing when you are close to going up in an NTA score)
  - Ex: If an NTA comorbidity score is 2, the base rate is \$76.71 / NTA Comorbidity score of 3, \$106.28



# Identify opportunities



NTA Comorbidity Score Bubble: NTA Comorbidity Score is 1 point away from the next case-mix group.



# Identify opportunities

---



- Nursing Function Score Bubble: Nursing Function Score is 1 point away from the next case-mix group.
- PT/OT Function Score Bubble: PT/OT Function Score is 1 point away from the next case-mix group.



# Identify opportunities

Pinpoint underperforming & close cut points to set as QM scrubber rules.

Id	Quality Measure	Numerator	Denominator	Observed Rate	Adjusted Rate	State Avg.	National Avg.	4Q Avg.
L N016	Percent of Residents Assessed and Appropriately Given the Seasonal Influenza Vaccine	124	130	95.38%	95.38%	93.79%	95.66%	98.87%
L N017	Percent of Residents Who Received the Seasonal Influenza Vaccine	103	130	79.23%	79.23%	78.83%	76.69%	76.75%
L N018	Percent of Residents Who Were Offered and Declined the Seasonal Influenza Vaccine	21	130	16.15%	16.15%	14.22%	18.18%	20.42%
L N019	Percent of Residents Who Did Not Receive, Due to Medical Contraindication, the Seasonal Influenza Vaccine	0	130	0.00%	0.00%	0.74%	0.79%	1.70%
L N020	Percent of Residents Assessed and Appropriately Given the Pneumococcal Vaccine	100	102	98.04%	98.04%	90.81%	93.72%	97.80%
L N021	Percent of Residents Who Received the Pneumococcal Vaccine	69	102	67.65%	67.65%	64.83%	64.75%	67.88%
L N032	Prevalence of Falls	49	102	48.04%	48.04%	50.64%	41.31%	51.61%



# Identify opportunities

Pinpoint underperforming & close cut points to set as QM scrubber rules.

## N035 - Locomotion Independently Worse...

Long Stay NHC 5-★

2019-Q4		2020-Q1		2020-Q2	
28.46%		27.24%		17.19%	
▲ 15.22		▼ -1.22		▼ -10.05	
<b>Num.</b>	<b>Den.</b>	26	100	13	82
23	88	23.57%	45	<b>21.70%</b>	<b>45</b>
<b>4Q Avg.</b>	<b>Score</b>				
19.88%	60				

State Avg.  
15.14%

National Avg.  
17.09%

N035 - 2020-Q2 ✕

Risk adjusted 4Q Average (21.6995%) is only one resident away from INCREASING QM Score.

QM Score Cut-Points

150	0.00% — 8.21%	135	8.22% — 11.21%
120	11.22% — 13.50%	105	13.51% — 15.68%
90	15.69% — 17.60%	75	17.61% — 19.55%
60	19.56% — 21.53%	<b>45</b>	<b>21.54% — 23.94%</b>
30	23.95% — 27.47%	15	27.48% — 100.00%

78.55 / 362 ≈ 21.6995%

# Identify opportunities

---



150+ rules organized in 10 categories

- PDPM
- Inconsistent Dates
- QRP Submission Requirement
- RUG IV Bubbles (Medicare)
- QASP (CA)
- Common CMS Fatal Errors
- Quality Measures
- Submission Requirement
- Inconsistent Dates
- Care Area Assessment



# Track and enforce compliance

- Which rules trigger most often, and why?

## Flags by Rule

Critical		Title	Count
	0	Symptoms of Respiratory Infection (COVID-19)	887
	849	N021.01: (L) Received Pneumococcal Vaccine	849
	830	N025.01: (L) Loss of Bowel/Bladder Control	830
	811	Malnutrition	811

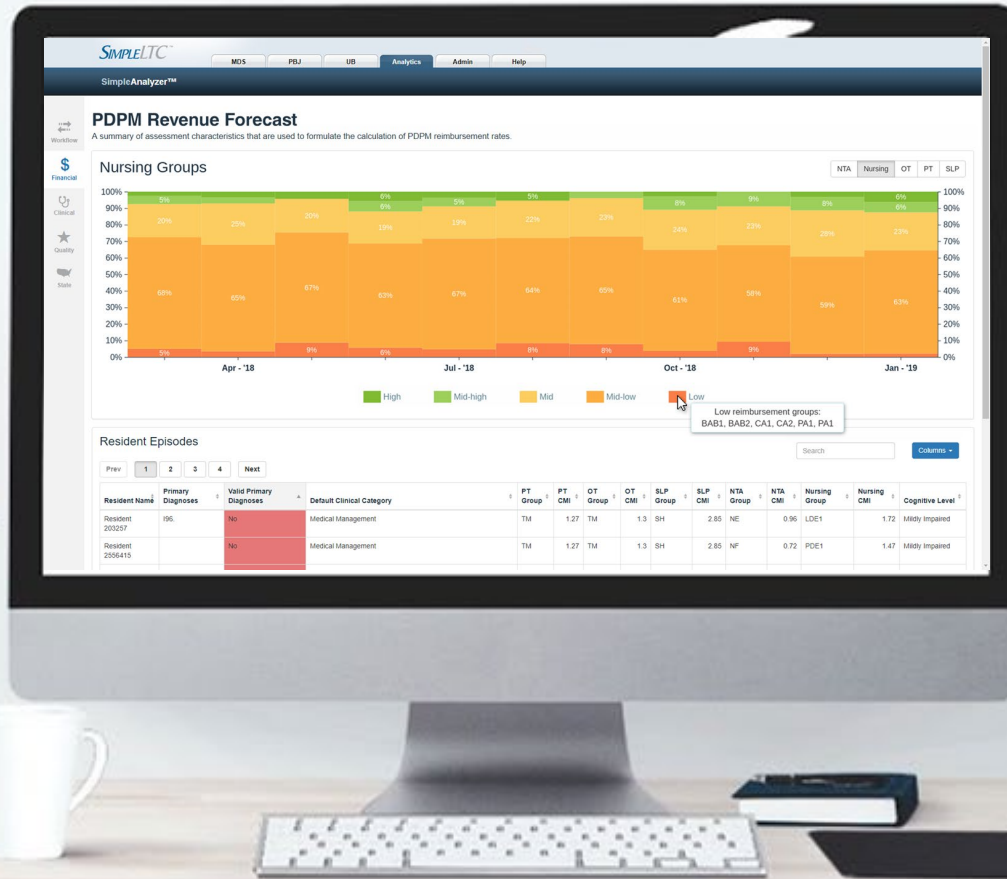
- Are there gaps in training/workflow steps that could prevent triggers?



# Track and enforce compliance

---

- Revisit your critical rules routinely
- Are the same rules still the critical ones?
- Identify new opportunities and set rules appropriately
- Continue repeating process



## SimpleAnalyzer™

MDS Five-Star analytics

PDPM performance insights

Real-time QM improvement

Pre-transmission MDS scrubbing

Trusted by thousands of providers

[Sign up for a live demo](#)



# Thanks for attending!

Find all our Learning Lab handouts at  
[simpleltc.com/learninglab](https://simpleltc.com/learninglab)